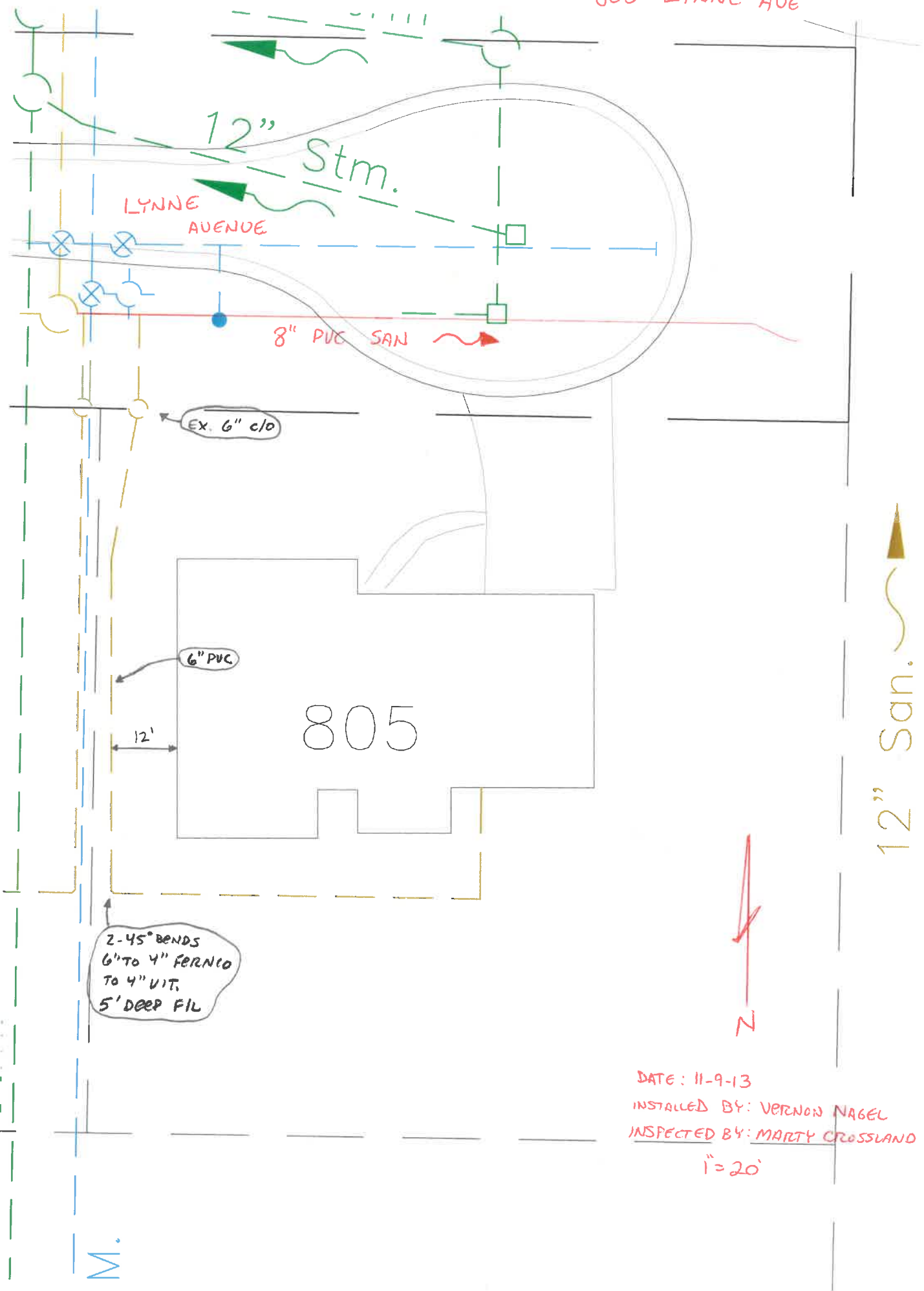


805 LYNNE AVE



LYNNE AVENUE

12" Stm.

8" PVC SAN

EX. 6" c/o

6" PVC

805

12'

2-45° BENDS  
6" TO 4" FERRO  
TO 4" VIT.  
5' DEEP FIL

12" San.



DATE: 11-9-13  
INSTALLED BY: VERNON NAGEL  
INSPECTED BY: MARTY CROSSLAND

1" = 20'

M.